

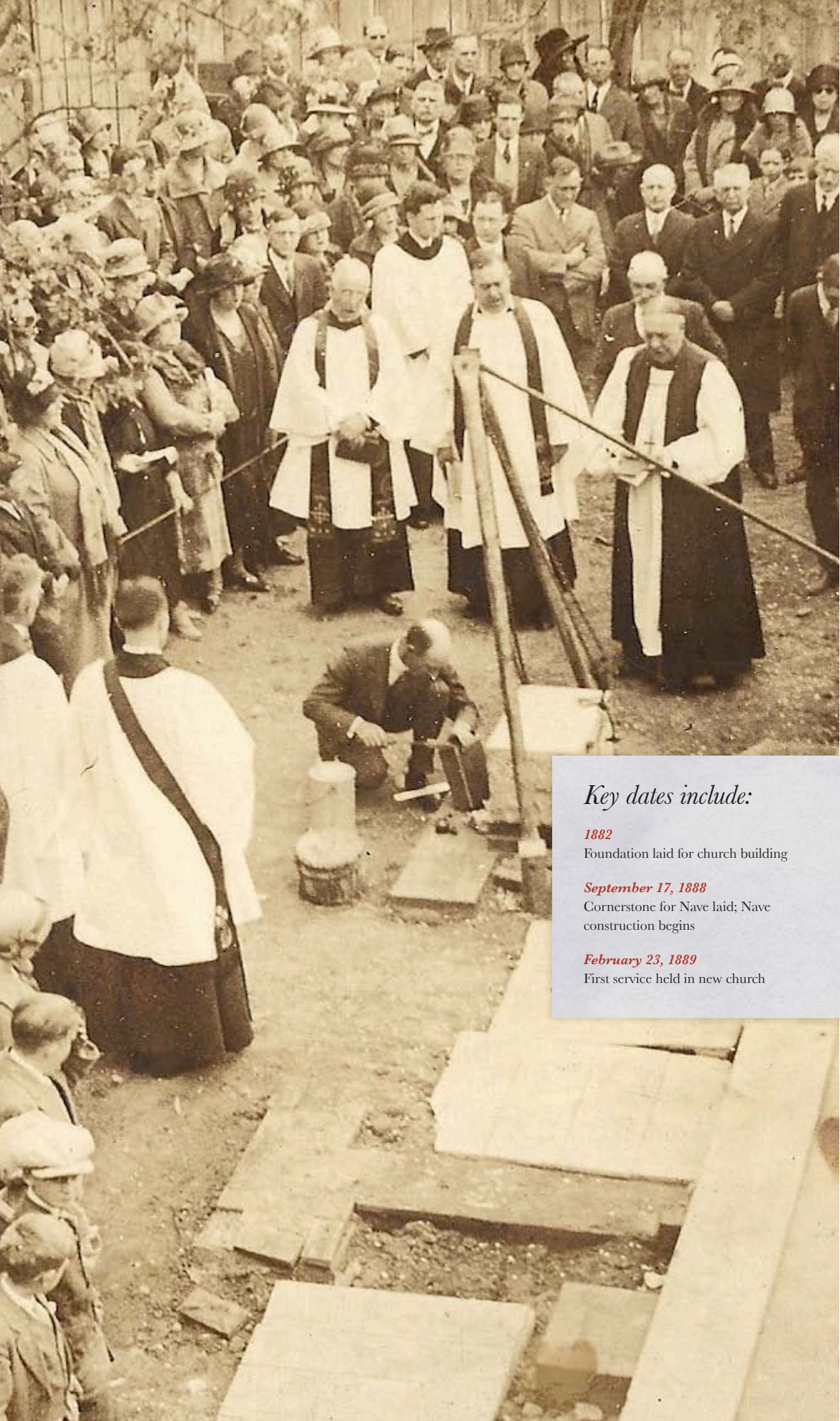


Vision

ST. MARK'S + CAPITOL HILL

2020

A \$1.5 million capital campaign *for* St. Mark's Episcopal Church, Capitol Hill



◀ Laying the cornerstone of the current Parish Hall in 1926



Photograph of the Nave from 1890s ▶

WHERE WE'VE COME FROM

St. Mark's has been a vibrant part of Capitol Hill for more than 125 years. Our predecessors made enormous financial and other sacrifices to ensure that our church would grow and succeed.

Key dates include:

1882
Foundation laid for church building

September 17, 1888
Cornerstone for Nave laid; Nave construction begins

February 23, 1889
First service held in new church

1894
Second phase of construction, extending Nave to include chancel, tower, and old Parish Hall (current foyer and Dance Studio). Total cost of construction for the two phases: \$56,000, including the purchase of an organ.

1926
Parish Hall and Kitchen built

1965-66
Nave renovated; altar moved into center, pews sold (start of church in the round); Air conditioning installed based in part on a gift from President and Mrs. Lyndon Johnson

1984
Baxter House acquired via gift from parishioner Josephine Turner

1989
Holtkamp Organ purchased and installed

1990-91
Capital Campaign for construction of Undercroft

2003-2004
Tower repaired

Each of these efforts was undertaken with an eye toward the future, strengthening the St. Mark's community so that it would flourish for generations. Now it's our turn. By renovating and expanding the Parish Hall, we honor those who worked so hard in the past to build St. Mark's, enhance our present, and create hope and possibility for future generations.

Boldly

Paul Abernathy, our Rector and
Justi Schunior, our Assistant Rector ▶



WHO WE ARE TODAY

St. Mark's is a unique and thriving community of individuals that welcomes everyone, regardless of where they are on their faith journey. Our historic church building, completed in 1894, offers a warm and inviting space where we come together in large and small groups to worship, question, rejoice, mourn, and support each other.

We are committed to creating an environment of inclusive hospitality, engaging with our community in raising individual and communal consciousness about race, and striving for peace and justice in a complex and confusing world. And we seek to be good stewards of our environment, our church community and the greater communities of which we are a part.

We are the Church of the Open Communion—as the banner hanging outside our Nave proclaims, *“Wherever you are on your faith journey... Whatever you believe or don't believe... Baptized or not... We welcome you to join us.”*

Choir (at left) and
annual Christmas
Pageant ▼



WHERE WE'RE GOING

Like any healthy community, St. Mark's is constantly evolving, as are our needs. Over the past few years, the Vestry has realized that our aging facilities are in need of significant attention and investment. That has presented us with an amazing opportunity to consider what we want St. Mark's to become, in terms of our buildings, our programs, and our place in the broader community—and what it would take to get there.

Over the past 18 months, we have embarked on a journey together to determine how our space can best be renovated and expanded to meet not just our current needs, but to allow for flexibility for our future. Through a comprehensive discernment process, we gathered more than 1,000 dreams from members of the community about what St. Mark's could look like in the future. We analyzed the state of our buildings and systems; studied the relevant zoning, legal, code and historic preservation issues; and estimated the costs of a variety of possible projects to upgrade our facilities. We assessed the needs of the larger community of which St. Mark's is a part and found pockets of poverty that present numerous opportunities for using our building to address critical unmet needs. And we explored ways our facilities could function with less impact on, and be more respectful of, the environment.

That process led us to identify the following goals for any renovation and/or expansion plan:

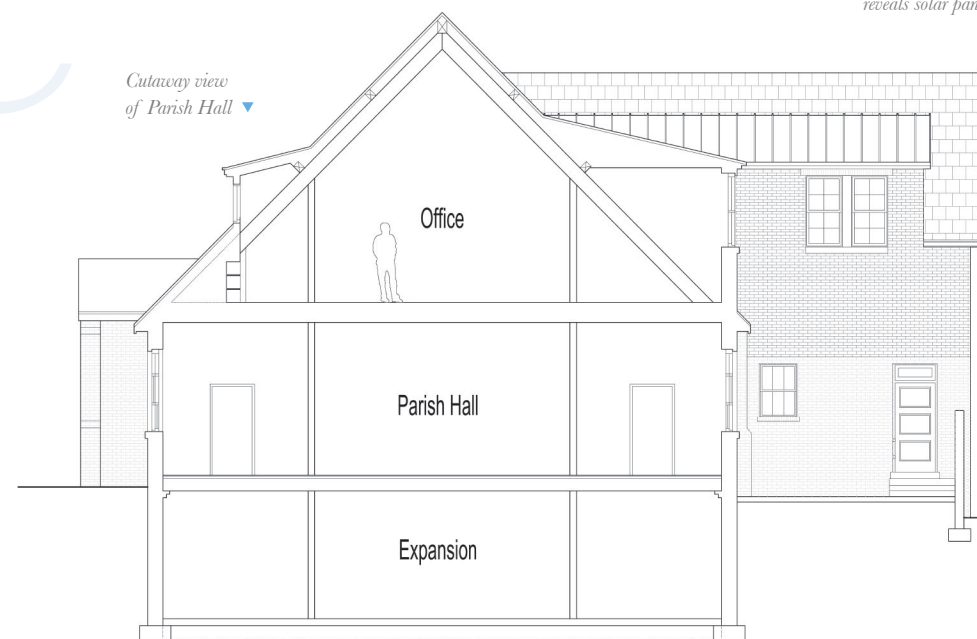
- *To preserve our historic property, while renewing our existing space, enhancing our mission, and providing for the future of our community.*
- *To implement sustainable systems throughout our facilities, demonstrating our respect for the world in which we live, and upholding our commitment to sustainability as a core value.*
- *To make our spaces more welcoming, accessible and available to our members, guests, and the community.*
- *To create additional space for our programs, with the flexibility to meet currently known and unforeseen future needs, enabling us to better realize our dreams.*
- *To strengthen our engagement with and commitment to the community and the world around us.*
- *To provide our staff with a functional, pleasant space to work in that is in one location, easily accessible to the community and the public, safe and secure, and that integrates the staff more fully into the daily workings of the church.*

Through the Vision 2020 capital campaign, we will:

- **Add a second floor to the existing Parish Hall** to house our staff and other meeting and administrative space
- **Renovate the Foyer** by relocating the stairs and elevator, opening up the lobby area to provide for smoother flow of traffic, reconfiguring the Vesting Room and Sacristy, and relocating the restrooms
- **Redesign the current Parish Hall** by relocating the Pub, upgrading the Kitchen, and creating new storage space
- **Expand the Undercroft** to extend beneath the expanded Foyer, creating space for new meeting/classrooms, new restrooms, new elevator, new stairs, and allowing for expansion space (but not finished space) beneath the Parish Hall
- **Improve the security of our buildings** by installing an alarm system, a door access control system, and a security video system
- **Reduce our impact on the environment** by using recycled, renewable materials in the new construction and incorporating energy efficient measures and new sustainable systems such as solar panels in our design
- **Complete some deferred maintenance projects** including repairing damaged areas of the terrazzo floor, repairing the slate roof, improving the suspension line over the altar, installing smoke detectors in the Sanctuary, and more

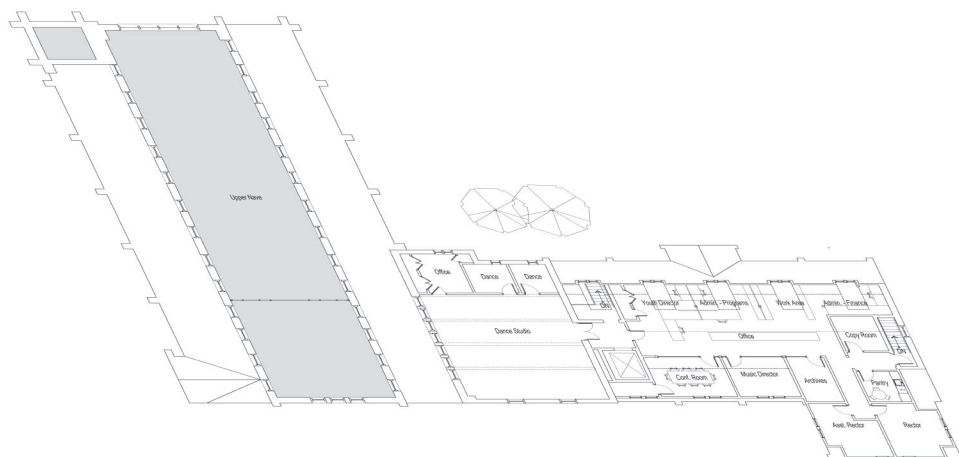


▲ View of renovated Parish Hall from courtyard

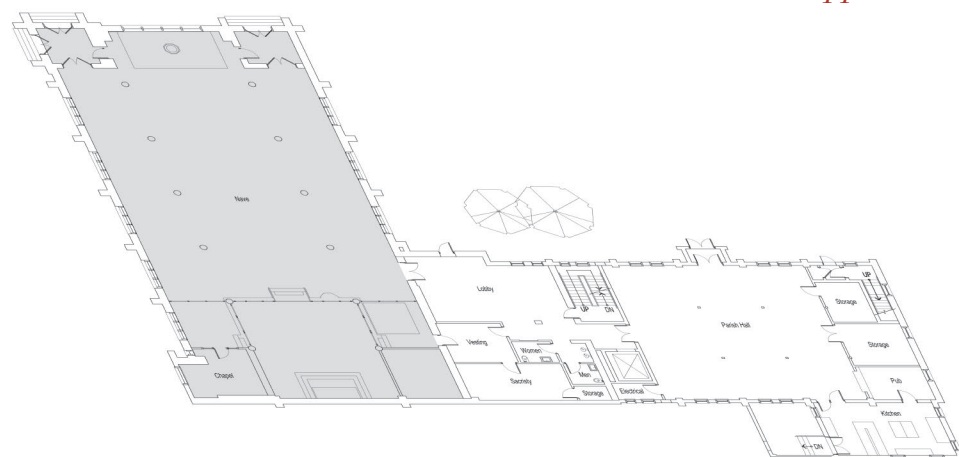


Renovated Parish Hall from alley reveals solar panels ▶

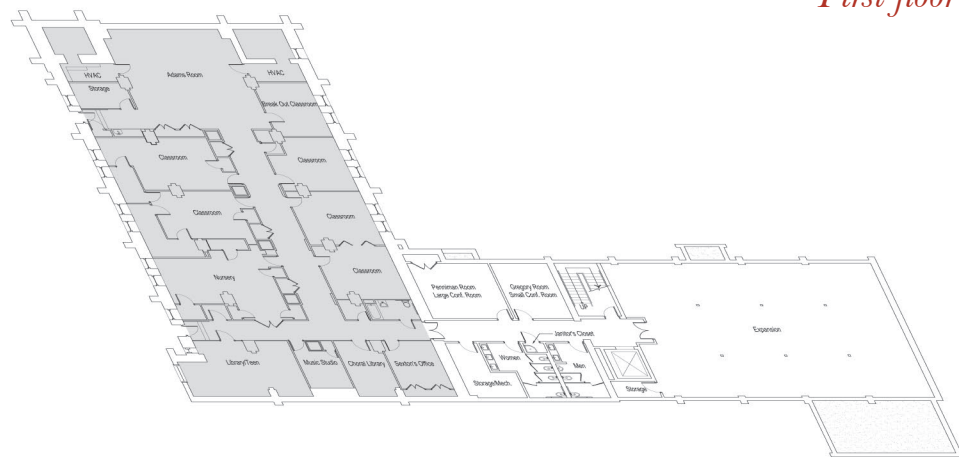




Upper level



First floor



Undercroft

HOW YOU CAN HELP

Project Totals

The total project cost to complete the plan is \$3.5 million:

Renovation and expansion of the Parish Hall: \$2.6 million

Architectural, engineering and other professional services: \$800,000

Kitchen improvements, deferred maintenance and security system: \$100,000

Of this sum, \$1.5 million will come from the *Vision 2020* capital campaign. Additionally, we expect to sell Baxter House near the end of the project, which we anticipate will generate at least an additional \$1 million. The difference will be made up through additional financing options, such as grants from foundations, as well as a potential mortgage.

Annual Canvass

To make wise use of volunteer time, we are conducting the annual Canvass concurrently with the capital campaign. While the capital campaign is key to our future, your annual pledge is crucial to St. Mark's day-to-day operations, powers our programs, and helps us make our mark in the wider community. Please consider a generous annual pledge first, and then consider your participation in the capital campaign.

Vision 2020

Your campaign pledge allows us to continue to prepare St. Mark's for a future of expanded ministry. The table at right shows the sizes and numbers of gifts that will be required to reach our campaign goal of \$1.5 million. Your campaign pledge is payable over 3-5 years, allowing you to match the timing of payments with your financial abilities.

View of Warden's Tower, built in 1894



Planned Giving

In addition to your annual and campaign pledges, you may also wish to consider making a planned gift such as a bequest in your will, charitable gift annuity or gift of appreciated property (such as real estate or appreciated stock). More information about planned giving may be obtained from the church office.

GIFTS ESSENTIAL to RAISE \$1.5 MILLION

<i>Size of gift</i>	<i>Number of gifts</i>	<i>Cumulative total</i>	<i>Monthly over 3 years</i>
\$250,000	1	\$250,000	\$6,944
\$100,000	1	\$350,000	\$2,778
\$75,000	2	\$500,000	\$2,083
\$50,000	5	\$750,000	\$1,389
\$25,000	12	\$1,050,000	\$694
\$10,000	18	\$1,230,000	\$278
\$5,000	23	\$1,345,000	\$139
\$3,000	37	\$1,456,000	\$83
\$1,000	43	\$1,499,000	\$28
\$500 and less	Many	Goal Achieved	Variable

*View through courtyard
arch to Parish Hall entry ▶*

STEERING COMMITTEE

Paul Abernathy, *Rector*

Justi Schunior, *Assistant Rector*

Cecilia Monahan, *Senior Warden*

Phil Guire, *Junior Warden*

Kenn Allen, *Co-Chair*

Michael Townsend, *Co-Chair*

Doris Burton

Ed Corr

Linda Ewald, *Treasurer*

Jane Rutherford

John Sedgewick



O God, sharpen our vision and strengthen our resolve that we, honoring our history, holding our present in our hands, and harboring hope for our future, commit ourselves with love and in justice to this labor. Having granted us the will to do these things, by your grace, give us power to accomplish them. **A M E N .**

By the Rev. Paul R. Abernathy, Rector



ST. MARK'S EPISCOPAL CHURCH

118 3rd Street SE | Washington, DC 20003 | www.stmarks.net | 201-543-0053