

*A \$340,000 capital campaign
for St. James' Episcopal Church*



We the People are the Church

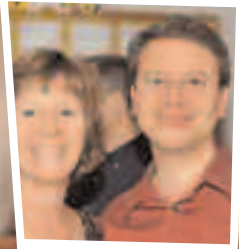


We the People are the Church

This short phrase
from the prayer with

which we end each Sunday service captures beautifully our mission at St. James'. We are called to build the kingdom of God on earth. While this is a calling to spiritual growth and community, it is clear that we need physical structures like a worship space, classrooms, parking lots, etc., to carry out our mission. ■ After a long, thoughtful and prayerful visioning and listening process, the Vision Committee developed a list of projects

that we believe reflects the needs and desires shared by our parish family. We are now at the point



where we must raise the funds to pay for these projects. A capital campaign gives each of us an opportunity to participate in St. James' mission of church building. ■ We are excited and optimistic about the future of our parish community, and we invite each of you to join us in making a reality of our dreams and visions by participating in our capital campaign. Thank you for your thoughtful and prayerful consideration.

FR. TIM
Rector

PETE SILVESTER
Campaign Committee Chair

Through our “We the People are the Church” campaign, we will accomplish the following:

1. Electrical Upgrade: \$40,000

While our electrical system (now over 50 years old) is safe, it needs upgrading in several areas to remain safe. In addition, as we expand our facilities and their use, further demands will be placed on our electrical supply and distribution.

Consequently, parishioners chose to increase our service from the current two-phase system with 400 amps to a three-phase system supplying 600 amps, with new circuit panels and boards.

2. Pedestrian Safety: \$86,000

Many parishioners have pointed to the need for improved pedestrian safety on St. James’ property (especially around the entrance drive from Route 30), as well as the need for increased parking capacity. As our congregation grows, these needs will only increase. To meet them, parishioners agreed to:

- Remove the parking spaces along the east side of the driveway and restripe the parking lot

- Install a separate walkway and curb along the driveway to the east side entrance
- Expand parking next to the playground, with a new entrance from Dustin Avenue

3. Handicapped Accessibility: \$201,500

Many parishioners have commented in various forums about the openness, friendliness and diversity of the people of St. James’. If we wish to remain diverse and inclusive, we need to improve and expand our facilities for the handicapped, both to ensure that we do not exclude anyone because of physical barriers, as well as for improved safety and comfort for



everyone. To do this, parishioners elected to:

- Install a new canopy for the covered entry at the current handicapped entrance
- Rebuild the wheelchair ramp to meet accessibility code requirements
- Expand the foyer by relocating the corridor to the nursery to the front of the building and relocating the adjacent Conference Room accordingly; providing new interior windows in the Conference Room; and removing a portion of the wall connecting the entry to the existing building to provide a wider opening
- Renovate the existing east entrance and access to that entrance
- Install a new entrance door with sidelights at the east entrance
- Remove obstructions along the hallway adjacent to the parish hall and the hallway to the library to provide a wider corridor

- Upgrade finishes in the widened corridor
- Remodel restrooms on the main level to be more accessible and install changing tables in both restrooms
- Change hallway and restroom lighting
- Install new carpeting
- Install the necessary plumbing and electrical as required

4. Enhanced Worship Space: \$12,500

While we have made many recent improvements to our worship space—new ceiling panels, new tile in the sanctuary, new carpeting in the nave and reinforced pews—parishioners opted to:

- Add a vapor barrier, gravel and ventilation in the crawl space under the nave to reduce dampness in the church
- Provide new wall covering and carpet in the library to match the nave

Campaign Goal: \$340,000



Welcoming and Accessible East Entry

How you can help.

First, make your stewardship pledge to power our many ministries and support the day-to-day life of St. James’.

Second, give generously to improve our wonderful St. James’ community and make our capital campaign a success.

Your tax-deductible gift is payable over up to four years.

Third, consider taking part in our planned giving program. Planned giving is a way you can make a substantial gift to St. James’ while often enjoying significant tax benefits.

No matter how you help, *thank you*.

Challenge Goal: \$35,000

Parishioners have determined that the improvements outlined above are most essential to the continued soundness of our buildings and well-being of our members and visitors. At the same time, a capital campaign gives us the opportunity to address two other desirable goals:

- Installation of half-glass doors between the nave and the library: \$5,500
- Replenishment of the Anna McI. Miller Fund: \$29,500



Gifts Needed to Raise \$340,000

Gifts of every size are essential to reach our campaign goal.

Size of gift	Number needed	Cumulative total	Monthly over 4 yrs.
\$75,000	1	\$75,000	\$1,563
\$50,000	1	\$125,000	\$1,042
\$25,000	1	\$150,000	\$521
\$15,000	2	\$180,000	\$313
\$10,000	5	\$230,000	\$208
\$5,000	10	\$280,000	\$104
\$2,000	15	\$310,000	\$42
\$1,000	25	\$335,000	\$21
\$500 and below	Many	Goal Achieved	Variable

Heavenly Father, help us remember that our building is not the Church; We, the people of God, are the Church.

Our building is the sacred place in which we gather:

- *To praise God's name;*
- *To ask God's forgiveness;*
- *To know God's healing power;*
- *To hear God's life-giving word; and*



- *To share our lives in God's community of saints.*

Now guide our vision and order our work, as we offer our time, talent and treasure to Your service; and help us bring to perfection what we begin in faith, through Christ, Our Lord. *Amen.*

ST. JAMES' EPISCOPAL CHURCH

409 East Lancaster Ave. ■ Downingtown PA 19335 ■ 610-269-1774

www.stjameschurch.ws